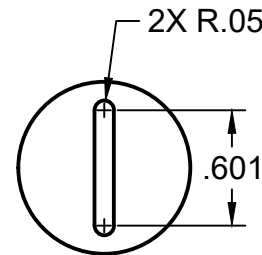
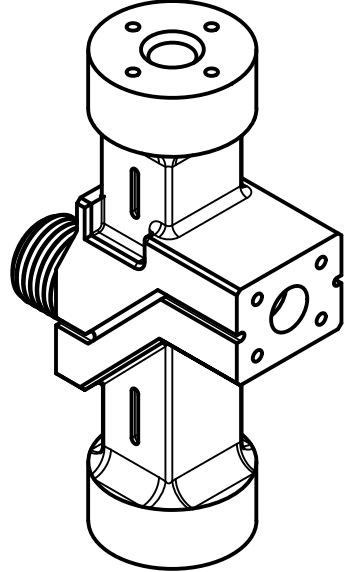
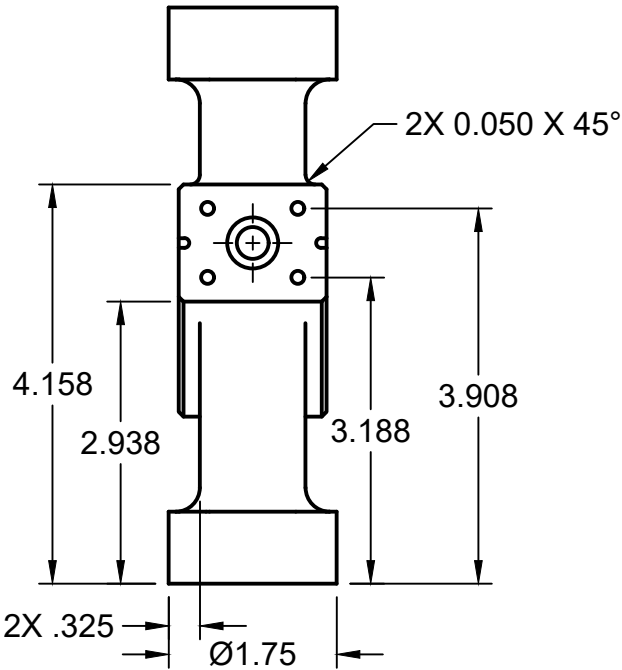
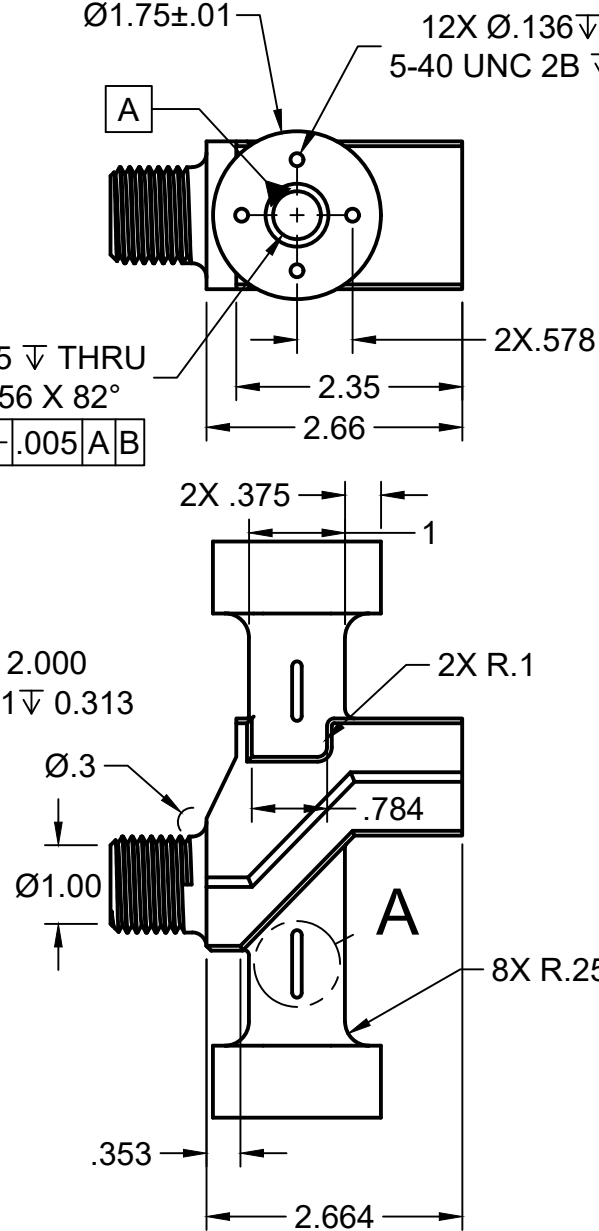
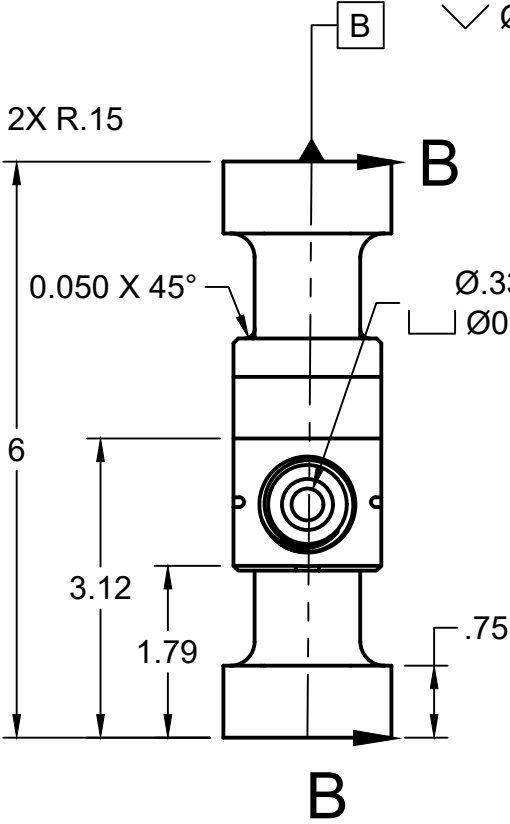
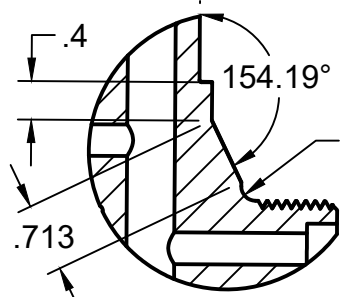
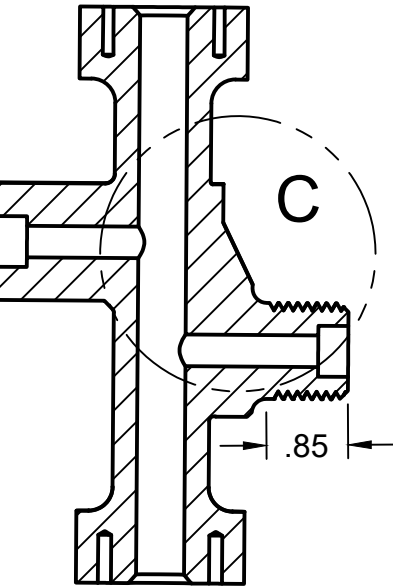


- NOTES:
UNLESS OTHERWISE SPECIFIED
1. MATERIAL: ALUMINUM ALLOY 6061-T6
 2. FINISH: ANODIZE PER MIL-A-8625, TYPE II, CLASS 2, LUSTERLESS BLACK
 3. SURFACE FINISH: ROUGHNESS 125 MICROINCHES MAX
 4. DIMENSIONS AND TOLERANCE APPLY AFTER FINISH
 5. PARTS MUST BE PACKAGED SEPARATELY
 6. DATUM A DIA. TO BE HONED AFTER COATING

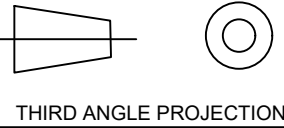


Unless otherwise state
dimensions are in inches

.X ± .08
.XX ± .01
.XXX ± .005
.XXXX ± .0005

ANGLES ± 2°

1. DO NOT SCALE DRAWING
2. REMOVE ALL BURRS AND SHARP EDGES .008 MAX.
3. 32/FINISH UNLESS NOTED



		Storro & Camarillo Advanced Manufacturing			
DRAWN BY	DATE	ITEM DESCRIPTION			
Kyle May	02/01/2025	OFFSET CONNECTOR			
QUALITY	DATE	FINISH	MATERIAL		
Riley Leonard	02/24/2025	SEE NOTE	SEE NOTE		
MFG	DATE	SCALE	Part #	SHT	REV
Jack Rindini	07/07/2025	1:2	3601215	1/1	C